

ACS STEPPER DRIVE / CONTROLLER & STEPPER MOTORS

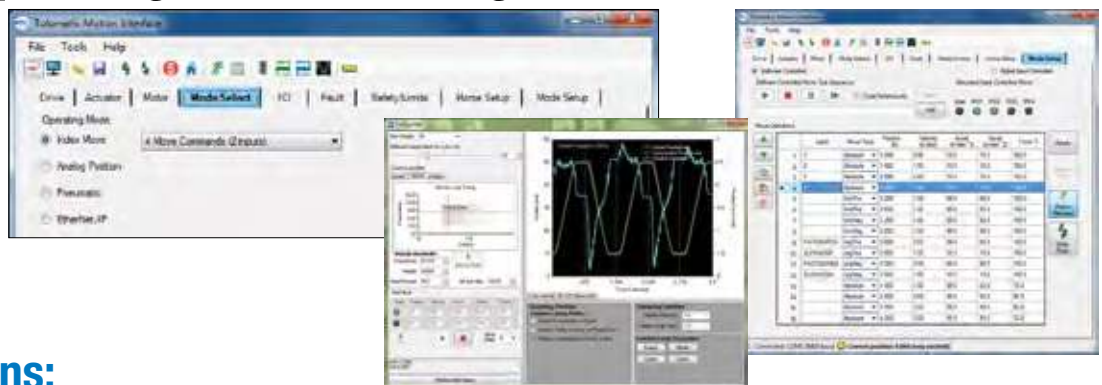
The ACS is an extremely easy-to-use stepper drive/controller and motor developed specifically to be used with electric actuators. Mounted, configured and tested as a complete motion system when ordered with any Tolomatic electric actuator. The ACS can be controlled with simple digital I/O, analog input or robust industrial ethernet.

ACS



Easy to Use Operating Modes & Configuration Software

- **OPERATING MODES**
 - Index position via digital I/O
 - Pneumatic Logic
 - Analog Position
 - Ethernet
 - EtherNet/IP
 - Modbus TCP
 - Supports rotary actuator: position and velocity moves



Available Options:

Cables

3m, 5m or 10m lengths

Planetary Gearboxes

Available ratios - 3:1, 5:1, 10:1

Power Supply

48VDC; 5Amp or 10Amp

ACS STEPPER DRIVE / CONTROLLER & STEPPER MOTORS

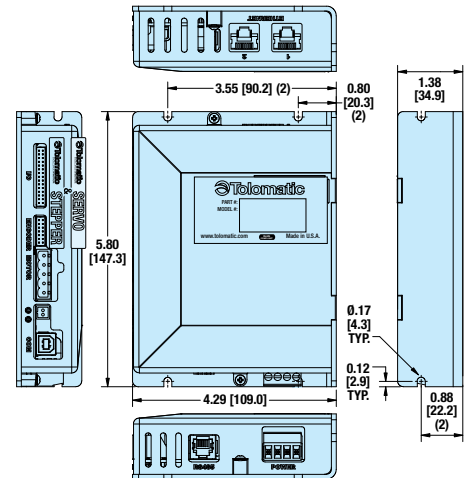
Drive Specifications

DRIVE POWER	
Current - Max	10 Amps
Voltage Nominal	10 - 52V
Over Voltage	55V
Under Voltage	9V
Absolute Maximum Voltage	60V
Logic Current Draw (24V)	200 mA

See ACS Hardware and Installation Guide (Stepper #3604-4183) for more details.

OPERATING CONDITIONS	
Ambient Temperature	25°C Nominal
Operating Temperature	0 - 40°C
Storage Temperature	0-70°C
Humidity	0 - 90% non-condensing
Weight	0.27 kg

Dimensions



Motor Specifications

		NEMA 11	NEMA 17	NEMA 23		NEMA 34	
		AMS1A1	AMS1B1	AMS1C1	AMS1C2	AMS1D1	AMS1D2
Resistance	Ohms	3.5	2.4	1.5	0.39	0.138	0.188
Inductance	mH	2.3	4.5	3.7	1.53	1.13	2
Rated Current	Amps-Peak/ Phase	1	1.5	2	5	10	10
Max. Torque	N-m	0.21	0.59	0.85	1.51	2.75	6.0
Maximum RPM		1800	2000	1200	2000	2000	1850
Degree per Step		1.8°	1.8°	1.8°	1.8°	1.8°	1.8°
Rotor Inertia	kg-mm ²	1.76	8.19	21.95	38.92	94.82	159.78
Motor Weight	kg	0.20	0.36	0.55	1.00	1.60	2.70
Motor Type		Bipolar Stepper, 1.8° per Step					
Encoder		Differential; 500 line/rev (2000 count post quad)/rev					



See ACS brochure (Servo #3600-4185) for dimensions and more details.



3D CAD available at
www.tolomatic.com
Always use configured
CAD solid model to determine
critical dimensions



USA

3800 County Road 116
Hamel, MN 55340, USA
Phone: (763) 478-8000
Fax: (763) 478-8080
Toll-Free: **1-800-328-2174**
sales@tolomatic.com
www.tolomatic.com

EUROPE

Tolomatic Europe GmbH
Zeilweg 42
60439 Frankfurt am Main
Germany
Phone: +49 69-2045-7837
EuropeSales@tolomatic.com

CHINA

Tolomatic Automation Products
(Suzhou) Co. Ltd.
(ServoWeld® inquiries only)
No. 60 Chuangye Street, Building 2
Huqiu District, SND Suzhou
Jiangsu 215011 - P.R. China
Phone: +86 (512) 6750-8506
Fax: +86 (512) 6750-8507
ServoWeldChina@tolomatic.com

All brand and product names are trademarks or registered trademarks of their respective owners. Information in this document is believed accurate at time of printing. However, Tolomatic assumes no responsibility for its use or for any errors that may appear in



this document. Tolomatic reserves the right to change the design or operation of the equipment described herein and any associated motion products without notice. Information in this document is subject to change without notice.

Visit www.tolomatic.com for the most up-to-date technical information