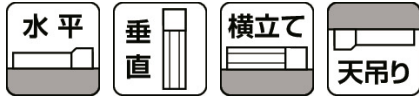
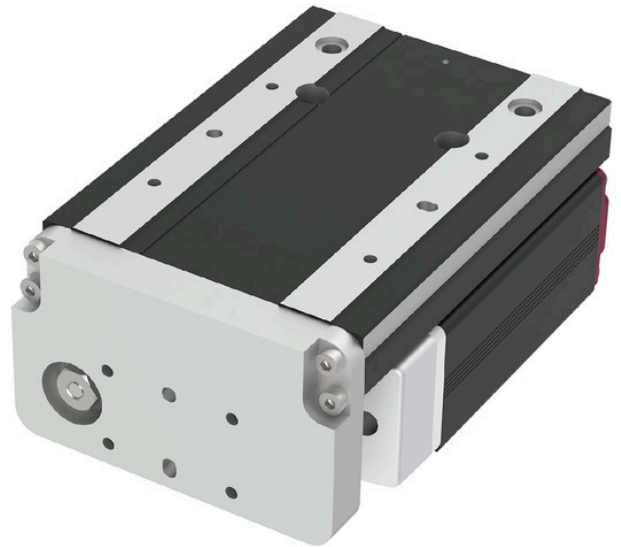


EC-TW3

Installation position



- Catalog PDF
- Instruction manual PDF
- 2D CAD drawings
- Parametric CAD Drawings
- Request information



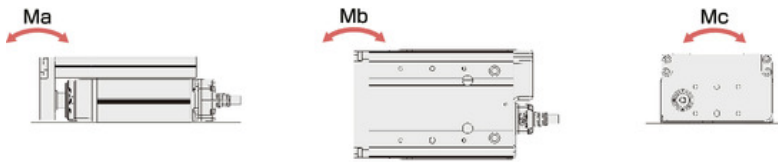
[↓ Dimensions](#) [↓ Selection considerations](#) [↓ Adaptive Controller](#)

Main Specifications

- Specification 1
- Specification 2

item		Contents			
	Lead	Ball screw lead (mm)	6	4	2
Horizontal	Payload capacity	Maximum payload (kg)	1.5	3	6
		Speed/Acceleration	Maximum speed (mm/s)	300	200
	Minimum speed (mm/s)	8	5	3	
	Rated acceleration/deceleration (G)	0.3	0.3	0.3	
	Maximum acceleration/deceleration (G)	0.3	0.3	0.3	
vertical	Payload capacity	Maximum payload (kg)	0.5	1	2
		Speed/Acceleration	Maximum speed (mm/s)	200	150
	Minimum speed (mm/s)	8	5	3	
	Rated acceleration/deceleration (G)	0.3	0.3	0.3	
	Maximum acceleration/deceleration (G)	0.3	0.3	0.3	
Pressing	Maximum thrust when pressing (N)	14	twenty one		42
	Maximum pressing speed (mm/s)	20	20		5
brake	Brake Specifications		Non-excitation electromagnetic brake		
	Brake holding force (kgf)	0.5	1	2	
stroke	Minimum stroke (mm)	30	30	30	
	Maximum stroke (mm)	50	50	50	
	Stroke pitch (mm)	20	20	20	

Table type moment direction



▶ Payload table by speed/acceleration

Standard grease specifications. The unit of payload is kg. Blank spaces indicate that the product cannot be operated.

Lead 6	Lead 4	Lead 2	
posture	Horizontal		vertical
speed (mm/s)	Acceleration (G)		
	0.3		0.3
0	1.5		0.5
50	1.5		0.5
100	1.5		0.5
150	1.5		0.2
200	1.5		0.2
250	1		
300	0.2		

If the ambient temperature is below 5° C, use the product at or below the speeds listed below.

- Lead 6: 200mm/s or less
- Lead 4: 150mm/s or less
- Lead 2: 50mm/s or less

Food grade grease specifications. The unit of payload is kg. Blank spaces indicate that the product cannot be operated.

Lead 6	Lead 4	Lead 2	
posture	Horizontal		vertical
speed (mm/s)	Acceleration (G)		
	0.3		0.3
0	1.5		0.5
50	1.5		0.5
100	1.5		0.5
150	1.5		0.2
200	1		

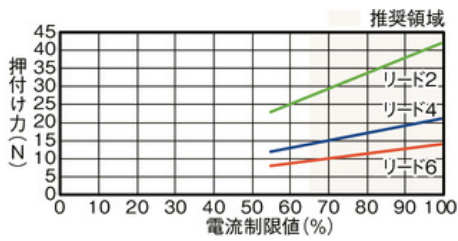
▶ Stroke and maximum speed

(Unit: mm/s)

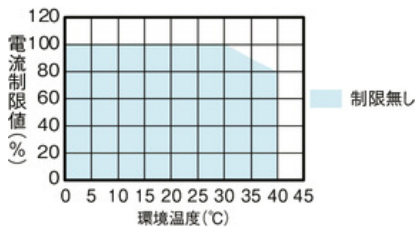
Lead (mm)	30 (mm)	50 (mm)
6	300<200>	
4	200<150>	

(Note) Values in < > are for vertical use.

Correlation diagram between pressing force and current limit value



Precautions when performing pressing operation



During high thrust pressing operations in high temperature environments, please use within the limits shown in the graph.

Adaptive Controller

(Note) The EC series has a built-in controller. For details on the built-in controller, see page [2-769](#).

International Standards



Selection considerations

選定上の注意



- (1) The payload in the "Main Specifications" is the maximum value. For details, refer to the "Payload Capacity by Speed and Acceleration Table."
- (2) When performing push-motion operation, refer to the "Correlation Diagram of Push Force and Current Limit Value." The push force is a guideline for the overhang load length.

	With brake	2	2
E	No brakes	4	4
	With brake	6	6
S		91.2	111.2

Mass by stroke

	stroke	30	50
Mass (kg)	No brakes	0.59	0.66
	With brake	0.77	0.79

[↩ Back to product information top](#)

[Home](#) > [Electric Actuator Product Information](#) > EC-TW3